



PIONEER INDUSTRIES, INC.
3325 S. Garfield Ave.
Commerce, CA 90040
(800) 338-9468
www.pioneerind.com

INSTALLATION

Tools:



Adjustable Wrench



Plumbers Putty



Teflon Tape



Rags

Model Number: 2PM440, 2PM540



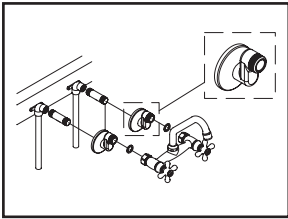
Warnings and Notes:

Check with local plumbing code requirements before installation.
This product should be installed by a local listed plumber.

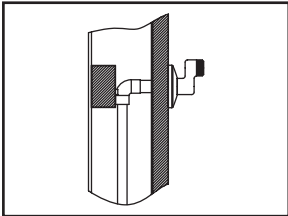
Do not use plumbers putty on threads.

Installation Steps:

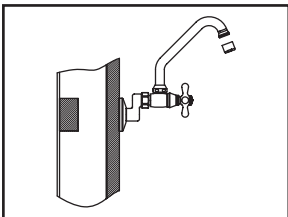
Two Handle Wall Mount Kitchen Faucet



(1) Confirm the distance between the centers of inlet pipe nipples is between 3-1/2" to 8-1/2" maximum apart. Apply Teflon tape at the threaded end of inlet pipe nipples. Align & tighten eccentric elbow onto both inlet pipe nipples. Ensure washer is inside faucet lock nut, attach faucet body to eccentric elbow by tightening both faucet locknuts.



(2) Adjust escutcheon of eccentric elbow to flush with finish wall.

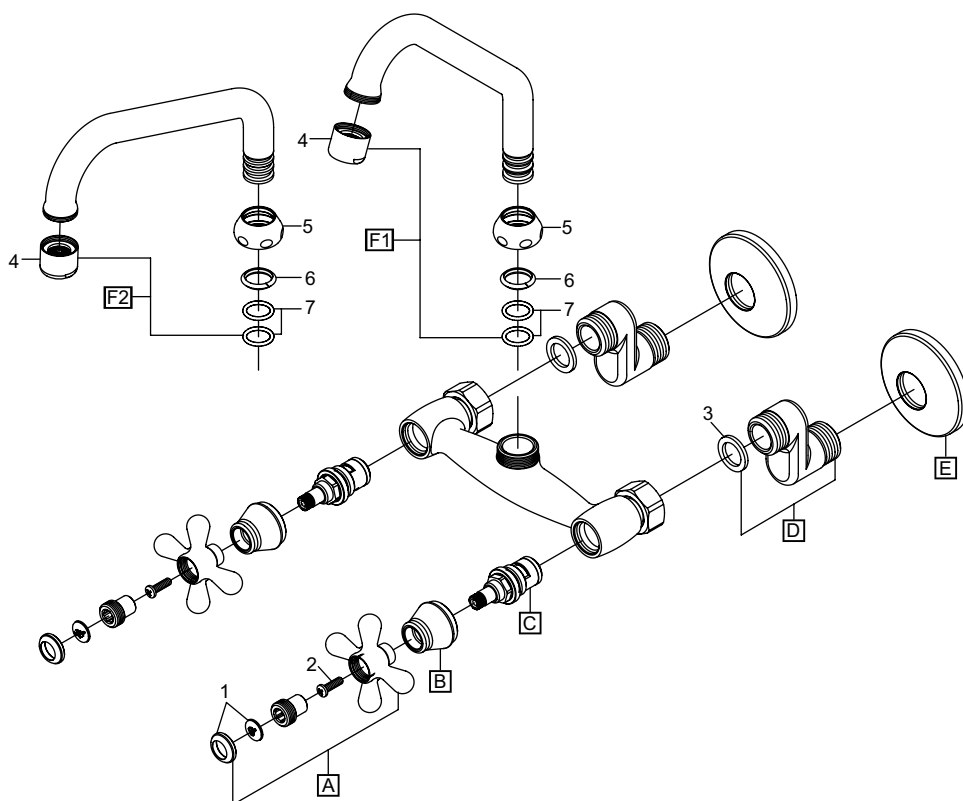


(3) Important : After installation is complete, remove aerator. Turn on water and allow both hot and cold water to run at least one minute each. While water is running, check for any leak. Turn off water and replace aerator.

Exploded Drawing

* Note: Please specify finish/color when ordering.

	ITEM #	DESCRIPTION
A	X-1200005C, H*	Cross Handle - Cold, Hot
B	X-4200054*	Handle Bonnet Nut
C	X-3200003	Ceramic Stem
D	X-4200056*	Eccentric Elbow
E	X-4200057*	Escutcheon
F1	X-2200008*	Hi-Tubular Spout (For 2PM440 Spout)
F2	X-2200009*	Tubular Spout (For 2PM540 Spout)
1	X-4200055C, H*	Index Button - Cold, Hot
2	X-4900029	Screw
3	X-4900030	Washer
4	X-4900084*	1.5 GPM Aerator
5	X-4200053*	Spout Bonnet Nut
6	X-4200090	Spout Snap Ring
7	X-4900012	Spout O-Ring



For more care information or trouble shooting inquiries about your Pioneer product, please call:
Pioneer Industries, Inc. (800) 338-9468
 Monday-Friday 8 AM to 8 PM EST (5 AM to 5 PM PST)
www.pioneerind.com